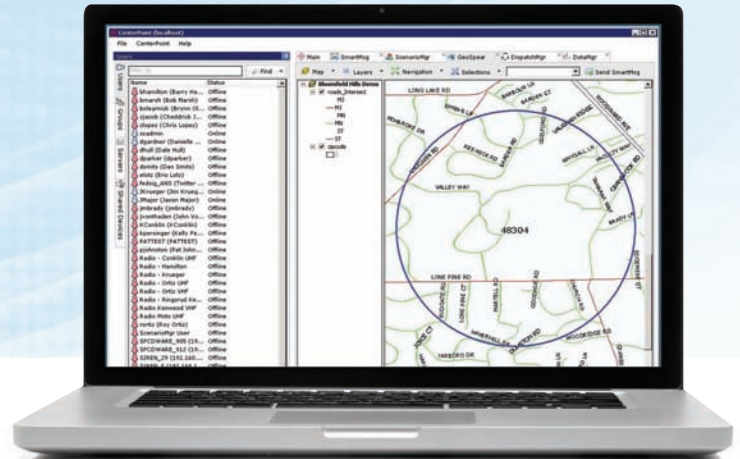


- Flexible method of tailoring alerts for defined geographic areas
- Easy-to-use mapping tools
- Allows pinpointed or specified addresses for alerts
- Supports ESRI software



Geographic Information System Mapping Module

GeoSpear is a Geographic Information Systems (GIS) application that provides a flexible method for tailoring alerts to defined geographic areas. GeoSpear's easy to use mapping tools enable users to issue SmartMsg alerts to specific areas on a map by simply drawing circles, rectangles or free-form polygons, or by selecting zip codes, counties, power grids, water supply lines, etc., from pre-defined map layers. The system even allows specific addresses on a map to be pinpointed for alerts to all recipients within a defined radius of that point.

GeoSpear supports ESRI software as well as other standard industry mapping applications that employ geographic latitude and longitude coordinates. GeoSpear allows users to configure area maps that employ underlying contact information developed from lists of users, groups and devices that are subsequently linked to specific geographical data. Additionally, GeoSpear supports both automated alerting of public safety personnel by geographic location, as well as geo-fencing radius boundary capabilities (i.e., school attendance zones, neighborhoods, etc.).